



[www.novell.com](http://www.novell.com)

**Lothar Wegner**  
OES Product Lead  
[lwegner@novell.com](mailto:lwegner@novell.com)



[www.sepusa.com](http://www.sepusa.com)

**Lanai Bayne**  
VP of Business Development  
[lb@sepusa.com](mailto:lb@sepusa.com)

**Shane Brown**  
Senior Technical Support Manager  
[sb@sepusa.com](mailto:sb@sepusa.com)

# Agenda

- Novell Open Enterprise Server
  - OES Today
  - OES Futures
- Maximize Open Enterprise Server with backup and restore from SEP

# Novell® Open Enterprise Server

Novell®

OES Today  
OES 11 Support Pack 1  
(Over 50 new Features!)

# OES11 Support Pack 1

## Feature Summary



### Single DVD Install

- Simplified integrated Installation
- No more swapping DVDs for install/upgrade



### FTP remote Home Directory

- Centralized and flexible FTP file access
- User Auto-login to the home Directory specified in eDirectory
- Designed for additional scalability



### Updated Ecosystem Support

- SLES11SP2, NCI 2.7.7, eDirectory 8.8.7



### eDirectory Updates

- Improved performance & scale
- **New graphical DS Repair**



### Domain Services for Windows

- Express Install
- Automated Install

# OES11 Support Pack 1

## Feature Summary - Continued



### Simplified Linux User Mgmt.

- Enhanced Workflows
- Ability to LUM enable by eDirectory Container



### Virtualization Interoperability

- VMware, Xen, Citrix Xen today
- Hyper-V, KVM added for SP1



### AFP Sub-tree search

- Simplifies Administration for Macs
- All users found in child OUs are automatically enabled



# OES11 Support Pack 1

## Feature Summary - Continued



### Migration Tools

- Faster sync performance
  - Get patch for NW source
- Copy only Dir Trustees option
- Do not copy Trustees option



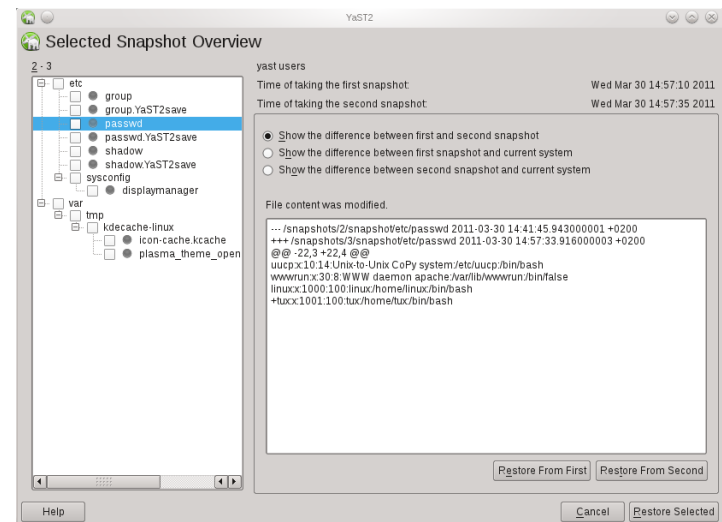
### File System Management

- NCP Enable volumes in NSSMU
- Metamig Utility – save/restore trustees
  - Restore from Trustee.nlm
- Nssquota tool
  - Now supports volume quotas
  - Clear option removes quotas



### Btrfs File system Support

- Use Btrfs with a Novell Cluster, Novell Client, or with the root partition
- Use File level snapshots to revert unwanted changes



Novell.

# Novell Filr Now Included with OES

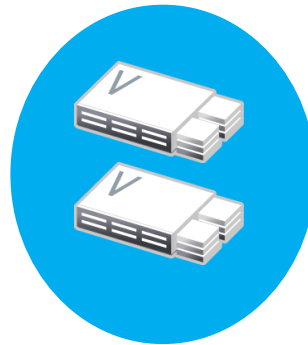
*Filr*



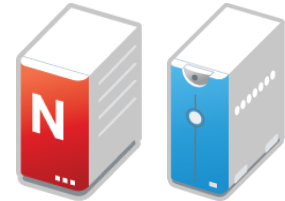
- Windows XP, 7, 8
- MAC\* OS X 10.7, 10.8
- iOS 5.x, 6.x (iPhone, iPad)
- Android 2.3, 4.x
- Web access

*clients*

- Soft appliance on VMware
- Self contained VM option
- External MySQL db and Search VMs



- Web based management
- LDAP user/group provisioning
- Shared folders and home directory integration
- Policy controlled sharing



- OES2 SP3, OES11 SP1
- Windows Server 2003, Windows Server 2008 R2
- File system rights and quotas honored
- No server agents or schema extensions required

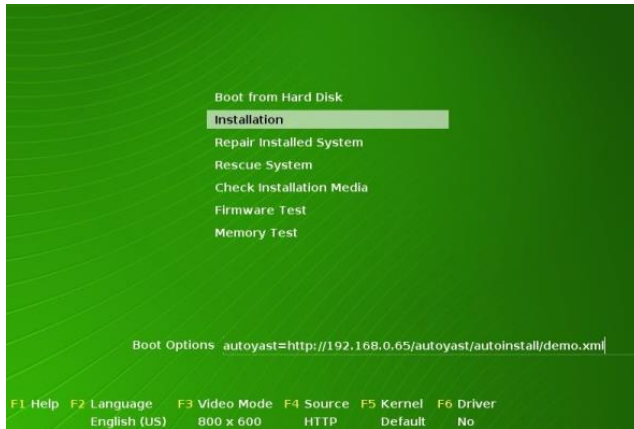
*servers*

Novell.



OES 11 Support Pack 2 and Beyond

# Simplified and Automated Deployments



## OES Autoyast Tool

- OES AutoYast Tool
- Configure First – Automated Deployment later
- Create unique Server Deployments
- Edit existing Server profiles
- Clone Servers or modify a clone

## Single Screen Install

Save Significant deployment costs through OES Automated Virtual or Physical deployments.

```
<networking>
  <dns>
    <on_persistent_config:type=boolean>false</on_persistent_config>
    <domain>suse</domain>
    <hostname>susell-4</hostname>
    <resolv_conf_policy>auto</resolv_conf_policy>
    <write_hostname config:type=boolean>true</write_hostname>
  </dns>
  <interfaces config:type=list>
    <interface>
      <bootproto>dhcp</bootproto>
      <device>eth0</device>
      <startmode>auto</startmode>
    </interface>
  </interfaces>
  <ipv6 config:type=boolean>true</ipv6>
  <managed config:type=boolean>false</managed>
  <routing>
    <ip_forward config:type=boolean>false</ip_forward>
  </routing>
</networking>
```

Novell.

# Cross-Platform Authentication

## Domain Services for Windows



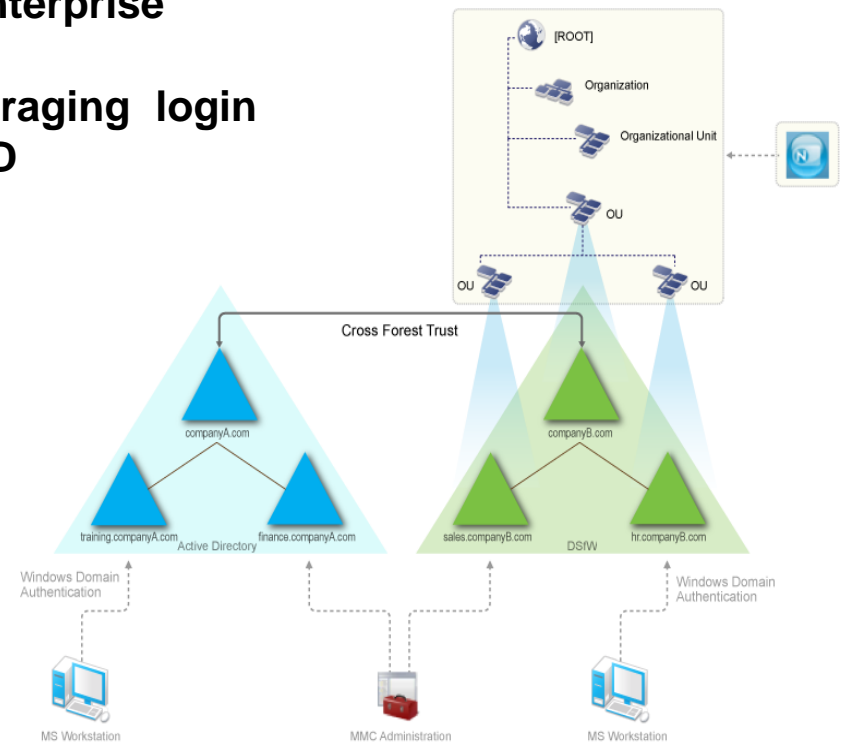
**Business Apps require  
AD authentication?**

**Leverage your best-in-class  
eDirectory identity store for  
all apps in your enterprise**

**Go Clientless leveraging login  
scripts through AD  
Group Policies.**

## Planned Updates

- NCP Client integration
- Sites & Services
- MAC Support
- NTLM Support
- WINS



NOVELL

# OES Management & Protocol Updates

- File Server Management & Monitoring



- CIFS/AFP – File / Connection - Management & Monitoring
- DFS Locate and Manage Junctions
- DST Quotas
- Nagios, Ganglia based monitoring

- Protocol Updates

- IPv6 Support
- SMBv3

# File Server Updates - > 8TB NSS Pools

- Add support for > 8 TB NSS Pools
  - Easy in-place conversion
    - No double storage!!
  - Across the wire Migration - migtools
  - Pool Move and Convert ( manual )
  - Large files – beyond 8TB
- Benefits
  - Supports data center growing storage needs >8TB volumes and file sizes

# Rocket up Performance

# Rocket up Performance



# NSS Optimized for SSD

- Meta-Data Cache Store

- Rebuild/Verify Pools 10x faster
- Backups 10x faster

- Data Store

- Random read operations done at lightning speed
- Higher scalability
- Ideal for VDI deployments

Novell.

# File Server Updates

Rocket up Performance

## Technical Enhancements:

- Delayed Block Allocation ( faster read on disk)
- Spinlock avoidance for cached reads ( fast cache read)
- Big Submit BIO – Write
- Integrated DirCache w NCP/CIFS

## Benefits:

- Faster read & write performance
- Reduced login times
- Faster Backups

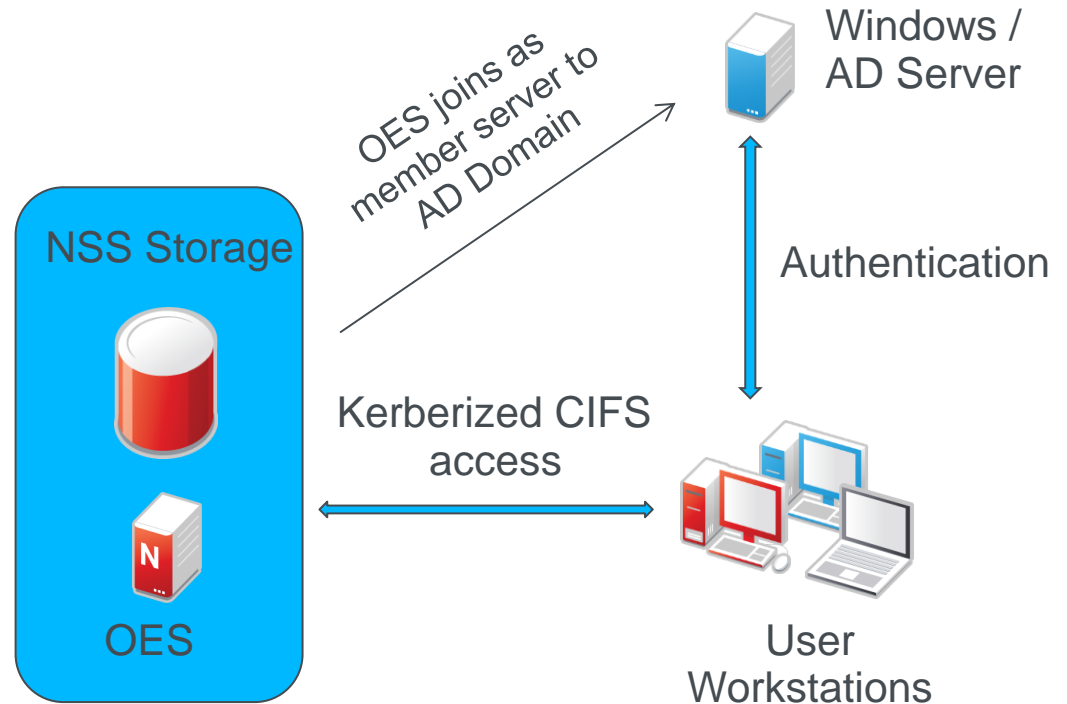


Novell.

# NSS access for AD users

Allows corporations with mandates to consolidate to one directory ( AD) to leverage NSS file system investment and keep NSS features/benefits.

- MMC manages MS rights on NSS volumes
- User maps via CIFS to NSS, and leverages AD group policies for client drive mappings
- Works for DSFW environment and AD environment





# Open Enterprise Server

Moving Forward

2H 2012

1H 2013

2H 2013

Open  
Enterprise  
Server



## OES 11 SP1:

- **SLE11 SP2**
- KVM & Hyper-V Support
- Btrfs Support
- Single DVD install
- FTP Home Directory
- AFP sub-dir login search
- NCS STONITH
- NCS management
- DSFW express install
- Automated Upgrade

## Novell Client :

- Windows 8 Support
- SSO with Live ID & OES File shares

## iPrint Updates :

- Windows 8

## eDirectory 8.8.7 for OES2 and OES11

## IDM 4 Bundle Edition

## Novell Filr

- Dropbox for the enterprise

## BCC for OES11

## iPrint Appliance

## OES11 SP2 :

- **SLE11 SP3**
- Simplified and Automated deployment
- DSFW - NCP & Mac support
- CIFS & AFP File/Connection Monitoring
- DST Quotas

## Future (2014)

- IPv6 Support
- NSS AD Support
- NSS Performance

Novell.

**Thank You**

**Novell®**

This document could include technical inaccuracies or typographical errors. Changes are periodically made to the information herein. These changes may be incorporated in new editions of this document. Novell, Inc. may make improvements in or changes to the software described in this document at any time.

**Copyright © 2012 Novell, Inc. All rights reserved.**

All Novell marks referenced in this presentation are trademarks or registered trademarks of Novell, Inc. in the United States. All third-party trademarks are the property of their respective owners.

